

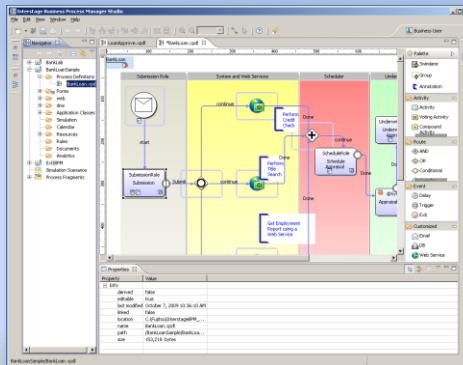
Interstage BPM Components

- Interstage BPM Studio
- Interstage BPM Console
- BPM Server/Engine

Interstage BPM Studio - BPM



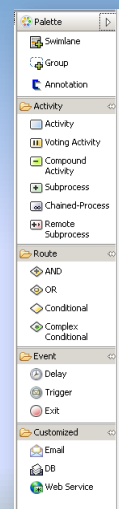
- Interstage-BPM Studio WYSIWYG Business Process editor installed as a client application on a user's PC
- Process Definitions designed and maintained locally then deployed to an Interstage BPM Server



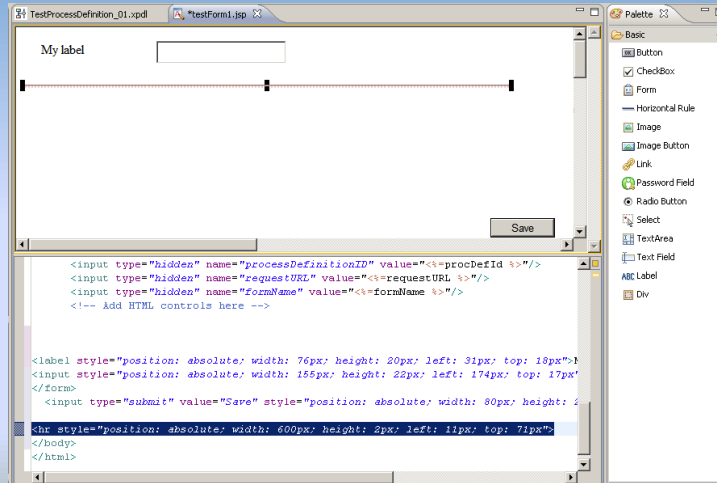
Process Definition Features



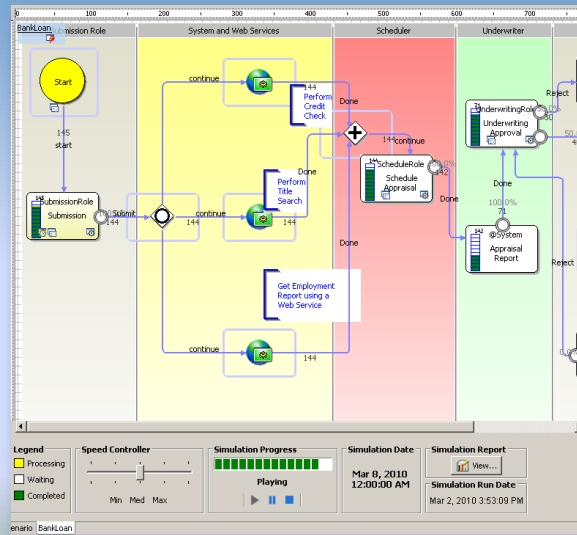
- Process Definitions are defined and edited using Business Process Modeling Notation (BPMN)
- Components of a Process Definition include:
 - Rich set of nodes
 - User Defined Attributes
 - Forms
 - Scripts / Actions / Triggers
 - Timers



- Integrated Forms Editor for developing rich User Interfaces for Process Definitions



- Supports Business Process Simulation and Scenarios Editor



Interstage BPM Console



- Web Application for BPM users and admins to interact with processes and perform task.
- Administrator Functions
 - Managing Users and Roles
 - Workflow Applications (Business Processes)
 - Manage system Properties
- Business User Functions
 - Start, manage and monitor Business Process execution
 - Perform tasks

Interstage BPM Console



■ Console URL

`http://<host:port>/console/<tenant>/getDashboard.page`

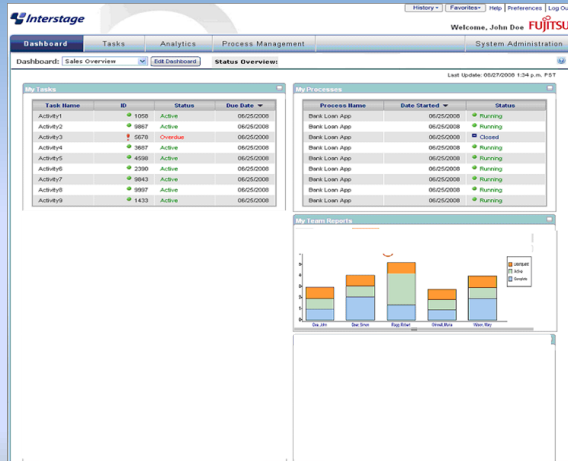
e.g. `http://192.168.172.128:49950/console/default/getDashboard.page`



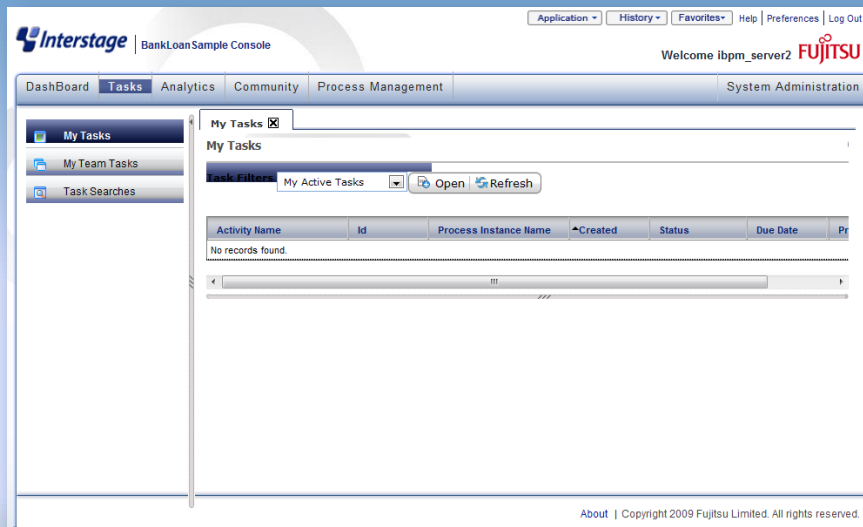
Dashboard



- Provides consolidated view of assigned tasks, owned processes and team performance view.



Interstage BPM Console

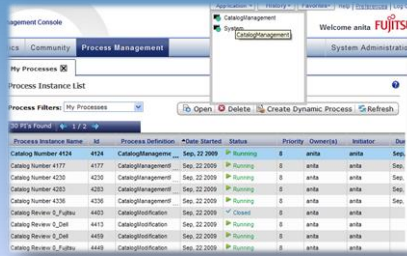


Favorites/Navigation



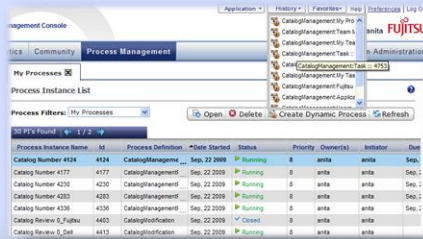
■ Favorites

- Add console pages to Favorites
- Saved in user profile for quick access

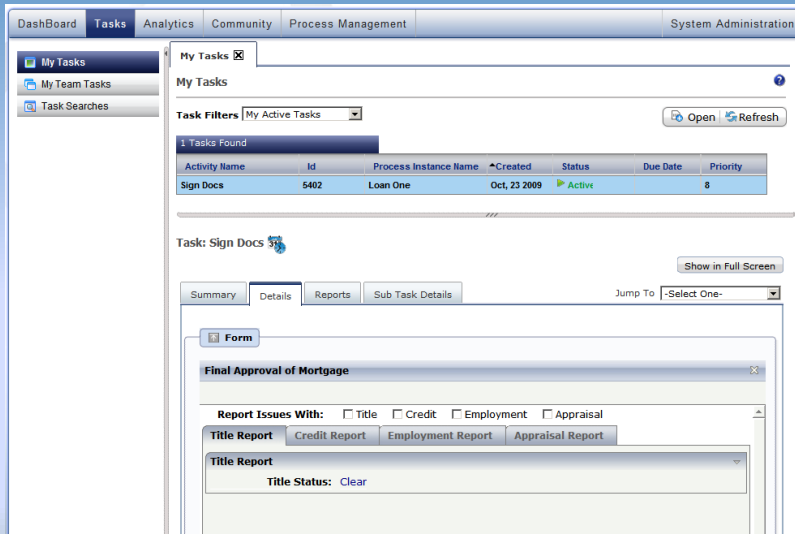


■ Navigation

- Can switch between applications easily
- Stores last 10 visited pages during the work session in History.



Work Item View



Process Definitions View



Interstage BPM v11.2

13

Copyright © 2010 FUJITSU LIMITED

Process Definition Name	Id	Version	State	Owner
task0	5303	1.0	Draft	ibpm_server2
Detailed Design	5292	1.0	Draft	ibpm_server2
Structural Design	5281	1.0	Draft	ibpm_server2
Development	5214	1.0	Draft	ibpm_server2
CompPD	5181	1.0	Draft	ibpm_server2
BankLoan	5105	1.0	Draft	ibpm_server2

Editing a Process Definition



Interstage BPM v11.2

14

Copyright © 2010 FUJITSU LIMITED

Decision Tables



- View Decision tables and rules associated with the application:

The screenshot displays the Interstage BPM v11.2 interface for configuring a decision table. At the top, a table lists applications found:

Aid	Name	Owner Group	State
BankLoanSample	BankLoanSample	AdminRole	Online

Below this, the configuration page for 'Application : BankLoanSample' is shown, with tabs for 'Details', 'Settings', and 'Variable'. The 'Settings' tab is active, containing sections for 'Dashboard Settings' and 'Decision Table Settings'. The 'Decision Table Settings' section includes a table of existing decision tables:

Name	Description
LoanType.dt	Rule to approve and route the Loan Application

An 'Input Parameter Mapping' dialog box is overlaid on the screen, showing the configuration for the 'LoanType.dt' decision table. It has tabs for 'General', 'Class', and 'Data Mapping'. The 'Data Mapping' tab is active, showing the following mappings:

No.	Name	Type	Value
1	Rules Set	String	Group1
2	Decision Table	String	LoanType
3	Personal	Float	Loan_Amt
4	Server Context	ServerEnactmentContext	sec

Below the input mappings, the 'Output Mappings' section shows:

No.	Name	Type	Value
1	LoanType	STRING	Loan_Type



shaping tomorrow with you