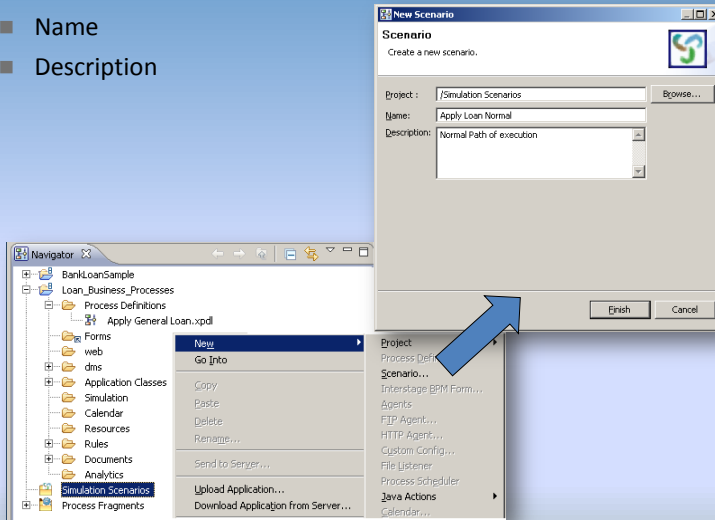


Simulation Scenario

■ Create Simulation Scenario

- Name
- Description



Simulation Properties

The screenshot shows the 'Scenario' properties dialog box in Interstage BPM v11.2. The dialog box is divided into several sections: 'General', 'Imported Process Definition', 'Simulation Period And Arrival Setting', 'Resources', and 'Running'. The 'Simulation Period And Arrival Setting' section is highlighted with a red box. A blue box highlights the 'Process Definition' field, and a red box highlights the 'Simulation Period And Arrival Setting' section. A blue arrow points from the 'Process Definition' field to the 'Process Definition' label. A red arrow points from the 'Simulation Period And Arrival Setting' section to the 'Period and Arrival Settings' label.

Scenario

General
This section describes general information about the scenario:
Name*: Apply Loan Normal
Description: Normal Path of execution

Imported Process Definition
Specify the Process Definition to simulate in this scenario:
Process Definition*: [Empty field]

Simulation Period And Arrival Setting
Specify time period and arrival specification for simulation
Gather Default Values From History (Optional)
Start Date*: Mar 30, 2010 [Select Date...]
End Date*: Apr 6, 2010 [Select Date...]
Arrival Interval*: 1 every 1 Hours 0 Minutes 0
Arrival Type*: Regular
Business Calendar: [Dropdown]

Resources
Currency*: \$
▶ Human Resources
▶ Additional Resources

Running
Make sure to set all mandatory (*) parameters before starting a simulation:
Simulate this scenario:
[Run Simulation]

Simulation Period and Arrival Settings

- Controls the data flow i.e. number of requests/instances processed per unit time.
- Start Date, End Date and Arrival Interval controls the total number of instance generated.
- Arrival Type
 - Regular: one instance per unit time
 - Random: time interval between instances is random but total number remains the same
- Business Calendar
 - Business calendars can be created and used to control the number of requests e.g. if assignees work on task only during office hours.

Resource Settings

- Activity Settings
 - Simulation Node Properties

The screenshot shows the 'Activity' simulation node properties dialog. The 'Simulation' section is active, showing a 'Working Duration' of 0 Months, 0 Days, 1 Hours, and 0 Minutes. Below this is a table for 'Additional Resources' with one entry: 'Resource1' with a count of 10. There are 'Add' and 'Remove' buttons next to the table. Below that is a table for 'Arrow Probability Information' with one entry: 'submit' with a probability of 100.00%.

Resource Name	Count
Resource1	10

Arrow Name	Probability
submit	100.00%

Resource Effort and Cost Settings

Simulation Period And Arrival Setting
Specify time period and arrival specification for simulation
[Gather Default Values From History \(Optional\)](#)

Start Date*:

End Date*:

Arrival Interval*: 1 every Hours Minutes

Arrival Type*:

Business Calendar:

Resources

Currency*:

Human Resources
All human resources populated based on roles:

Role Name	Unit Of Measurement	Cost Per Unit	Count	Business Calendar
Customer Service	Minute	1.00	1	
Loan Agent	Minute	1.00	1	
Loan Officer	Minute	1.00	1	

Additional Resources
All additional resources populated based on activity level simulation properties:

Resource name	Unit Of Measurement	Cost Per Unit

Run Simulation

Scenario

General
This section describes general information about the scenario:

Name*:

Description:

Imported Process Definition
Specify the Process Definition to simulate in this scenario:

Process Definition*:

Simulation Period And Arrival Setting
Specify time period and arrival specification for simulation
[Gather Default Values From History \(Optional\)](#)

Start Date*:

End Date*:

Arrival Interval*: 1 every Hours Minutes

Arrival Type*:

Business Calendar:

Resources

Currency*:

▶ **Human Resources**

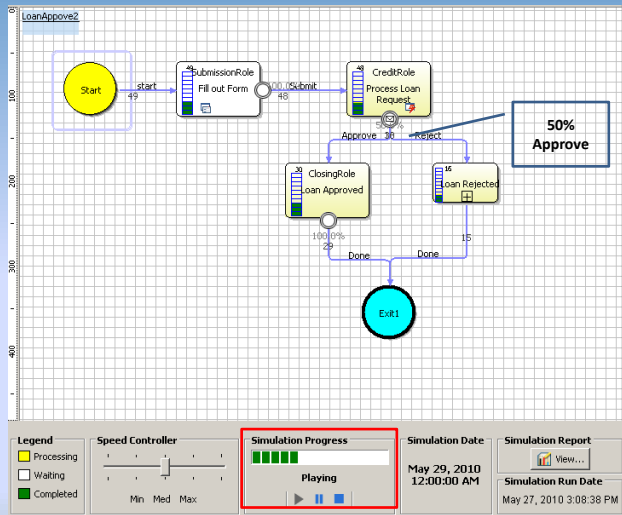
▶ **Additional Resources**

Scenario

Running
Make sure to set all mandatory (*) parameters before starting a simulation.

Simulate this scenario:

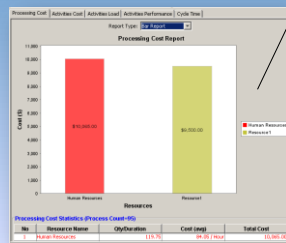
Play Simulation



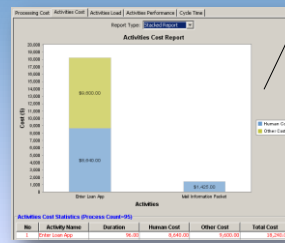
Simulation Reports



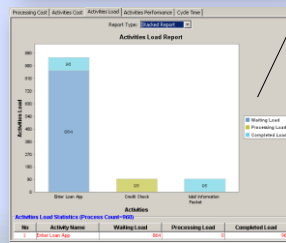
■ Simulation Graphs



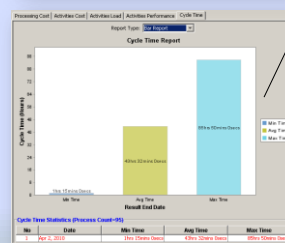
Processing Cost



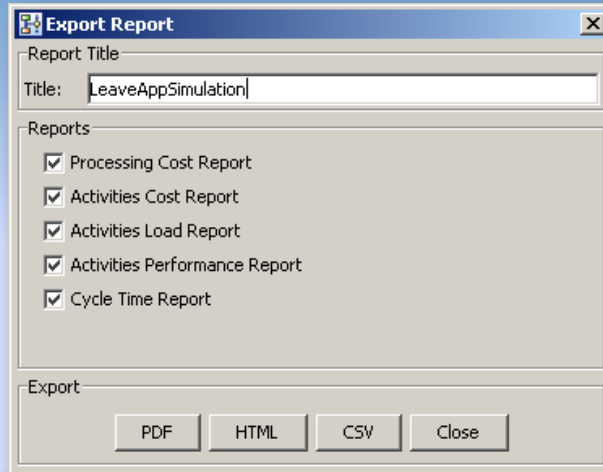
Activities Cost



Activities Load



Cycle Time



Export Report

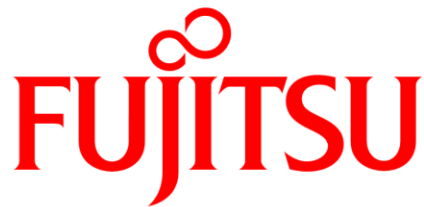
Report Title
Title: LeaveAppSimulation

Reports

- Processing Cost Report
- Activities Cost Report
- Activities Load Report
- Activities Performance Report
- Cycle Time Report

Export

PDF HTML CSV Close



shaping tomorrow with you